

**Keyword:**  
**Computer Battery**

**Type:** **SL-360/486**

**Performance Data**

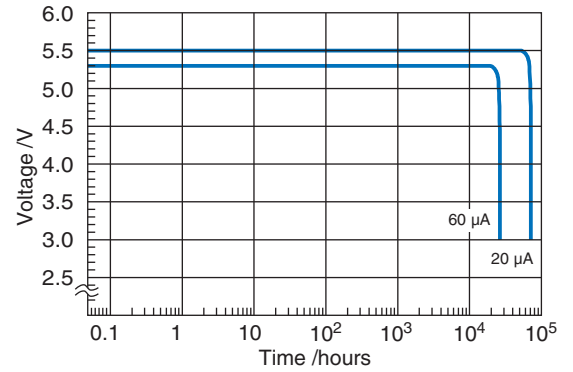
(Typical values for batteries stored at 25°C for one year)

System	Li/SOCl <sub>2</sub>
Nominal voltage	6.0 V
Nominal capacity	1.9 Ah
Nominal current	0.2 mA
Max. continuous discharge current	0.2 mA
Wires	AWG 24
Housing	UL 94V2
Classification	user replaceable
Weight	60 g
Temperature range	-55...+85 °C

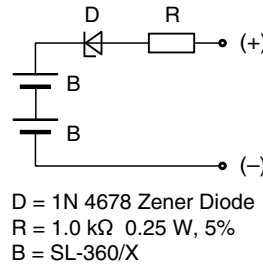
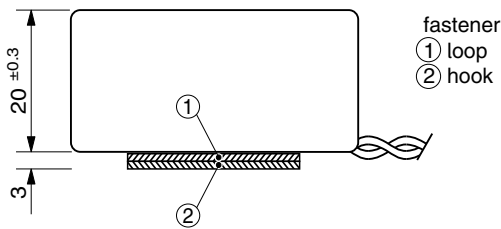
**WARNING:**  
 Fire, explosion, and severe burn hazard. Do not recharge, disassemble, heat above 100 °C, incinerate, or expose contents to water.

See page 4 for further safety recommendations.

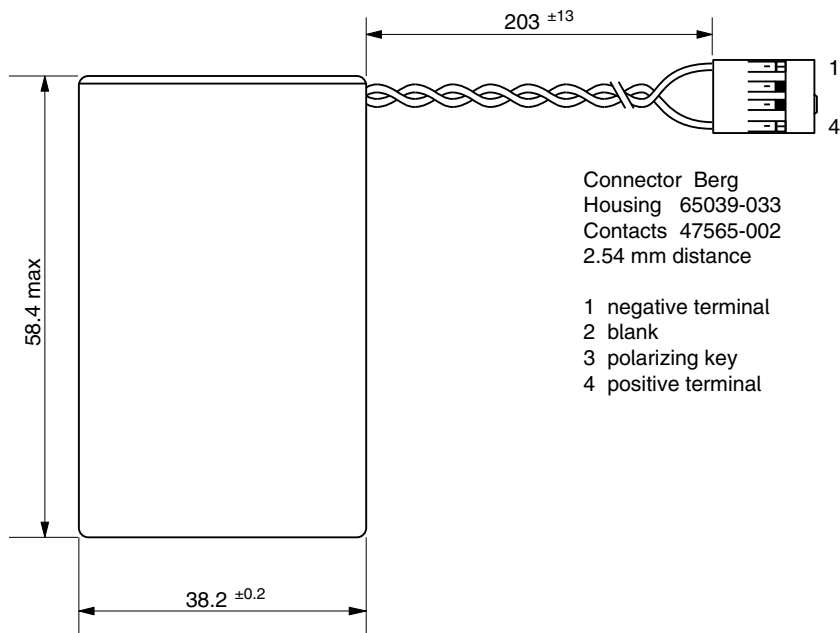
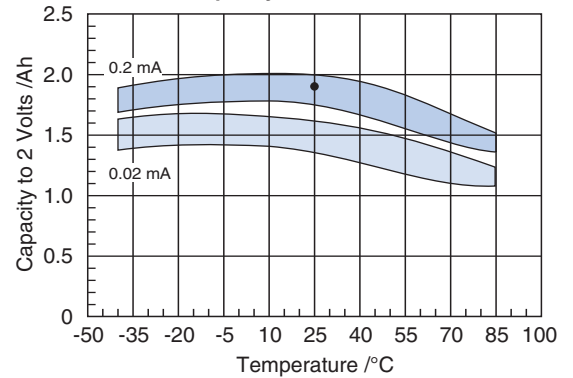
**Typical Discharge Curves at +25°C**



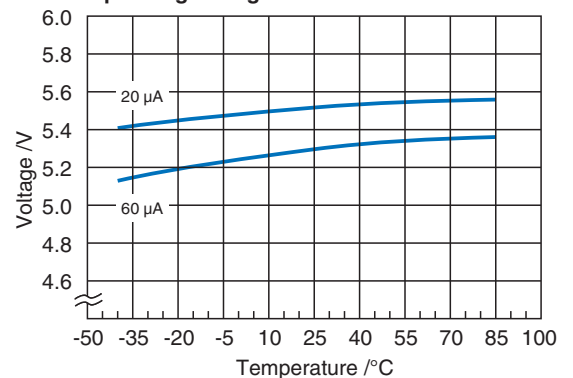
**SL-360/486**



**Available Capacity**



**Operating Voltage**



**Available Terminations**

SL-360/486 Cable and connector

**Catalogue No.**

14 2 6360 486

*Any values given here are for information purposes only. They also depend on actual conditions of use and are not warranties of future performance. Subject to change.*