

**nominal voltage:** 1,2V  
**max. charge voltage:** 1,5V

conditions  
 at standard charge  
 (0,1C / 20°C)

**capacity:**  
 nominal : 900mAh  
 minimal: 730mAh  
 650mAh

discharge at 0,2C  
 discharge at 0,2C  
 discharge at 1C  
 1,0V end discharge voltage  
 ambient temperature 20°C

**max. discharge current:** 1600mA

ambient temperature  
 20....50°C

**charge:**  
 standard charge: charge current 80mA  
 fast charge: charge current 800mA

charge time  
 16hrs at 20°C  
 1,1hrs

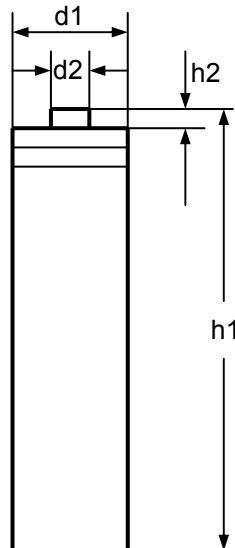
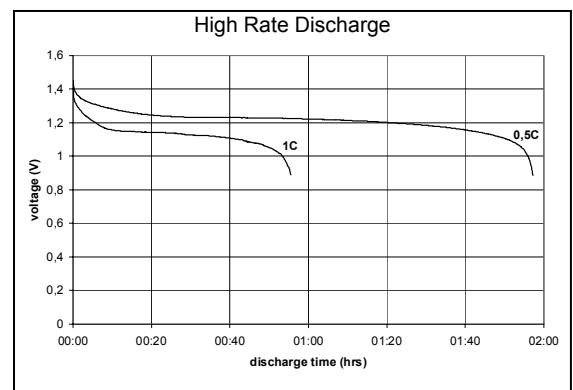
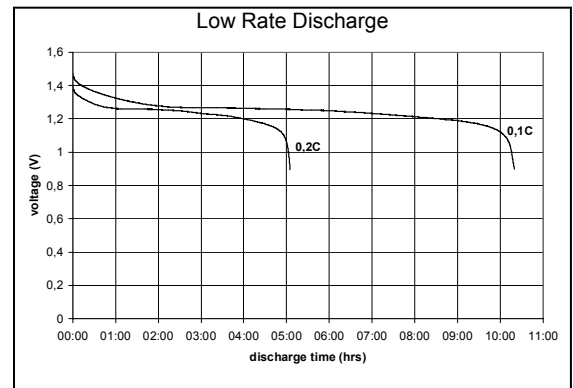
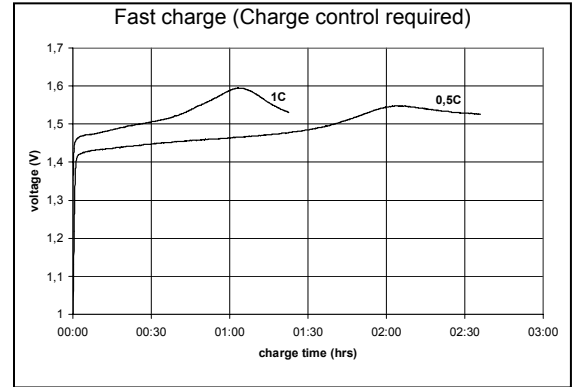
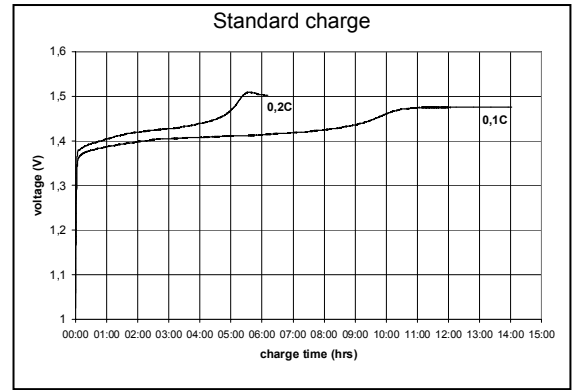
recommended charge termination control parameters:  
 -dV: 5....10mV  
 dT/dt: 0,8....1°C per min  
 TCO: 45....50°C

trickle charge current: 10....40mA (recommended)

**internal resistance:** ≤ 40mOhms at 1000Hz, battery fully charged

**life expectancy:** 500 cycles IEC standard

**ambient temperature range:** 0....45°C  
 0....40°C  
 0....50°C  
 -20....50°C  
 -20....40°C  
 -20....30°C  
 standard charge  
 fast charge  
 discharge  
 storage less than 30 days  
 storage less than 3 months  
 storage less than 1 year



**mechanical specifications**  
 cell dimensions (with sleeve)  
 diameter d1: 10,3-0,5mm  
 diameter d2: 3,8-0,5mm  
 height h1: 44+/-0,3mm  
 height h2: 1,5+/-0,5mm  
 weight: approx. 13g

	specifications for model/type:	AAA – NiMH 900mAh
	Ansmann drawing number / part number:	5030501
	drawn by / date:	Gramlich / 29.07.2005