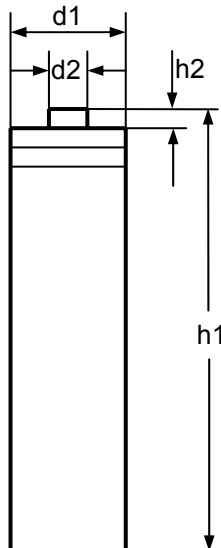
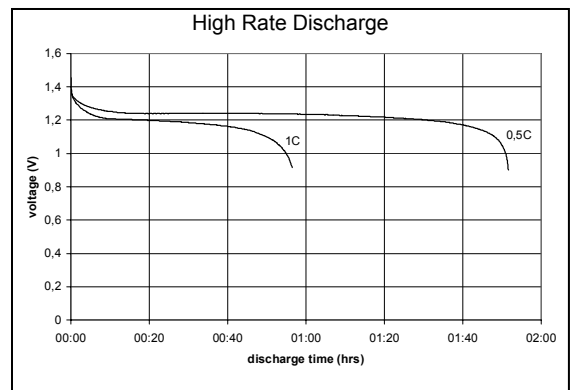
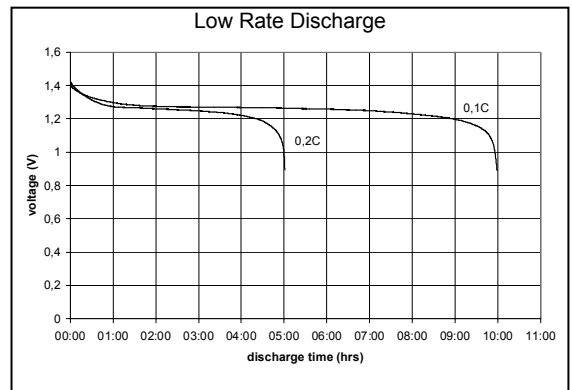
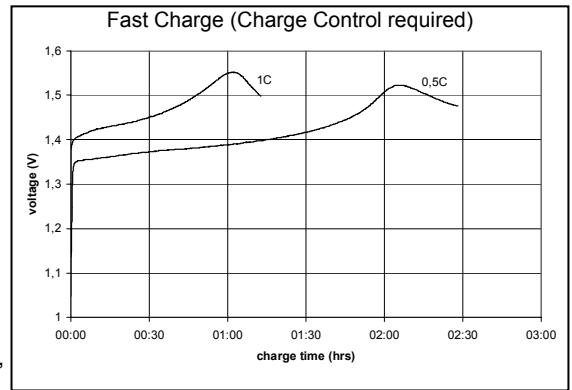
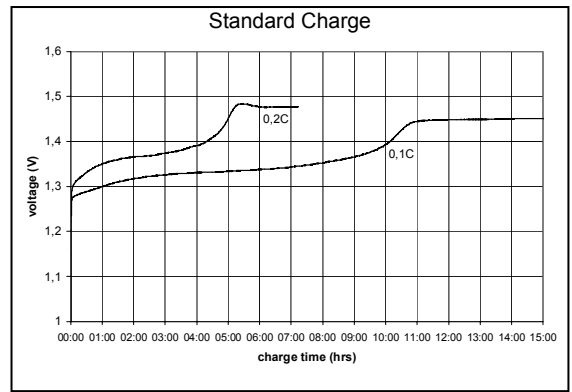


nominal voltage:	1,2V	conditions
max. charge voltage:	1,5V	at standard charge (0,1C / 20°C)
capacity		discharge at 0,2C
nominal :	2600mAh	discharge at 1C
minimum:	>2100mAh 2300mAh	discharge at 0,2C 1,0V end discharge voltage ambient temperature 20°C
max. continuous discharge current:	2500mA	ambient temperature 20....50°C
charge	charge current	charge time
standard charge:	250mA	16hrs at 20°C
quick charge:	900mA	3,25hrs
fast charge:	2500mA	1,1hrs
recommended charge termination control parameters:	-dV: 5....10mV dT/dt: 0,8....1°C per min TCO: 40...50°C	
trickle charge current:	20....100mA	(recommended)
continuous overcharge: (less than 1 year)	<125mA	no conspicuous deformation, no leakage
internal resistance:	≤ 30mOhms	at 1000Hz, battery fully charged
life expectancy:	>500 cycles	IEC standard
ambient temperature range:	0....40°C 0....40°C -20....65°C -20....50°C -20....40°C -20....35°C	standard charge fast charge discharge storage less than 30 days storage less than 3 months storage less than 1 year



mechanical specifications
cell dimensions (with sleeve)
diameter d1: 14,3-0,4mm
diameter d2: 5,5-0,5mm
height h1: 50,3-0,5mm
height h2: 1,6+/-0,3mm
weight: approx. 28g

	specifications for model/type:	AA – NiMH 2600mAh Digital
	Ansmann drawing number / part number:	5030711
	drawn by / date:	Gramlich / 28.06.2005