

nominal voltage: 1,2V
max. charge voltage: 1,5V

capacity:
 nominal : 1000mAh
 minimal: 900mAh
 820mAh

max. continuous discharge current: 2700mA

charge:
 standard charge: 95mA
 rapid charge: 210mA
 fast charge: 950mA

recommended charge termination control parameters:
 -dV: 5....10mV
 dT/dt: 0,8....1°C per min
 TCO: 45....50°C

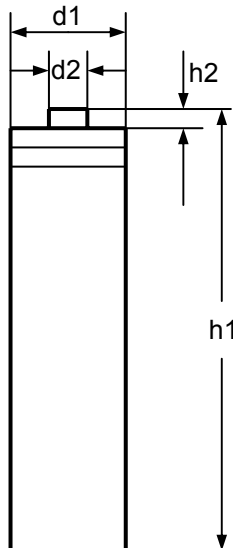
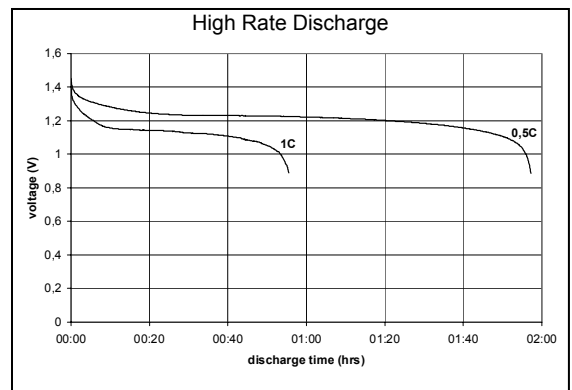
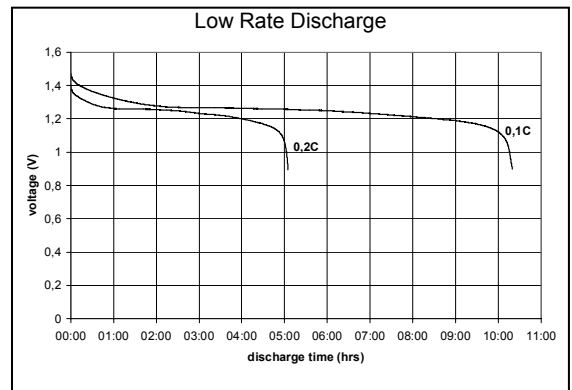
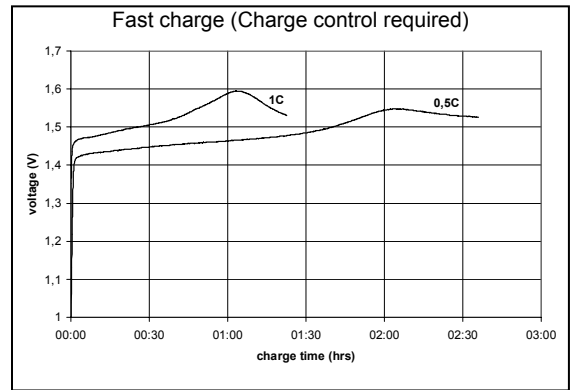
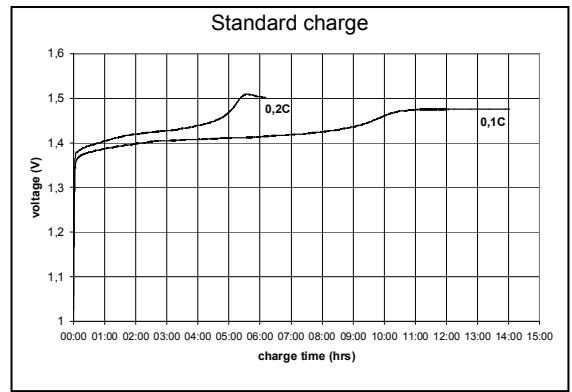
trickle charge current: 10....50mA (recommended)

internal resistance: ≤ 40mOhms

life expectancy: 500 cycles

ambient temperature range: 0....50°C
 10....45°C
 -20....60°C
 -20....50°C
 -20....40°C
 -20....30°C

conditions
 at standard charge (0,1C / 20°C)
 discharge at 0,2C
 discharge at 0,2C
 discharge at 1C
 1,0V end discharge voltage
 ambient temperature 20°C
 ambient temperature 20....50°C
 at 1000Hz, battery fully charged
 IEC standard
 standard charge
 fast charge
 discharge
 storage less than 30 days
 storage less than 3 months
 storage less than 1 year



mechanical specifications
 cell dimensions (with sleeve)
 diameter d1: 10,3 -0,5mm
 diameter d2: 3,8 -1,0mm
 height h1: 44+/-0,3mm
 height h2: 1,5+/-0,5mm
 weight: approx. 13g

	specifications for model/type:	AAA – NiMH 1000mAh
	Ansmann drawing number / part number:	5030881
	drawn by / date:	Gramlich / 27.12.2005