

data sheet

system: Lithium-Ion-Battery

nominal voltage: 3,7V

end charge voltage: 4,2V

max. charge current: 1100mA

charge conditions
 standard charge: 550mA for 3,5h min.
 fast charge: 1100mA for 2,5h min.
 charging method: CC-CV (constant current and constant voltage)

capacity
 after standard charge
 nominal: 1100mAh at 0,2C discharge to 2,75V
 minimal: 1000mAh at 0,2C discharge
 900mAh at 1C discharge

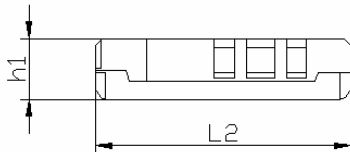
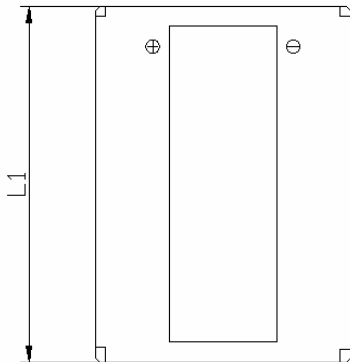
max. discharge current: 1100mA

life time expectancy: > 300 cycles

ambient temperature range
 charge: 0...45°C
 discharge: -20...60°C
 long term storage: -20...35°C (less than 1 year)

weight: 37g

dimensions: L1: 53,0mm
 L2: 38,2mm
 h1: 9,3mm



	specifications for model/type:	A – Nok 5 (Nokia BLC-2)
	Ansmann drawing number / part number:	5060083
	drawn by / date:	Gramlich / 04.07.2005